

# 14 mm Conductive Plastic Potentiometers

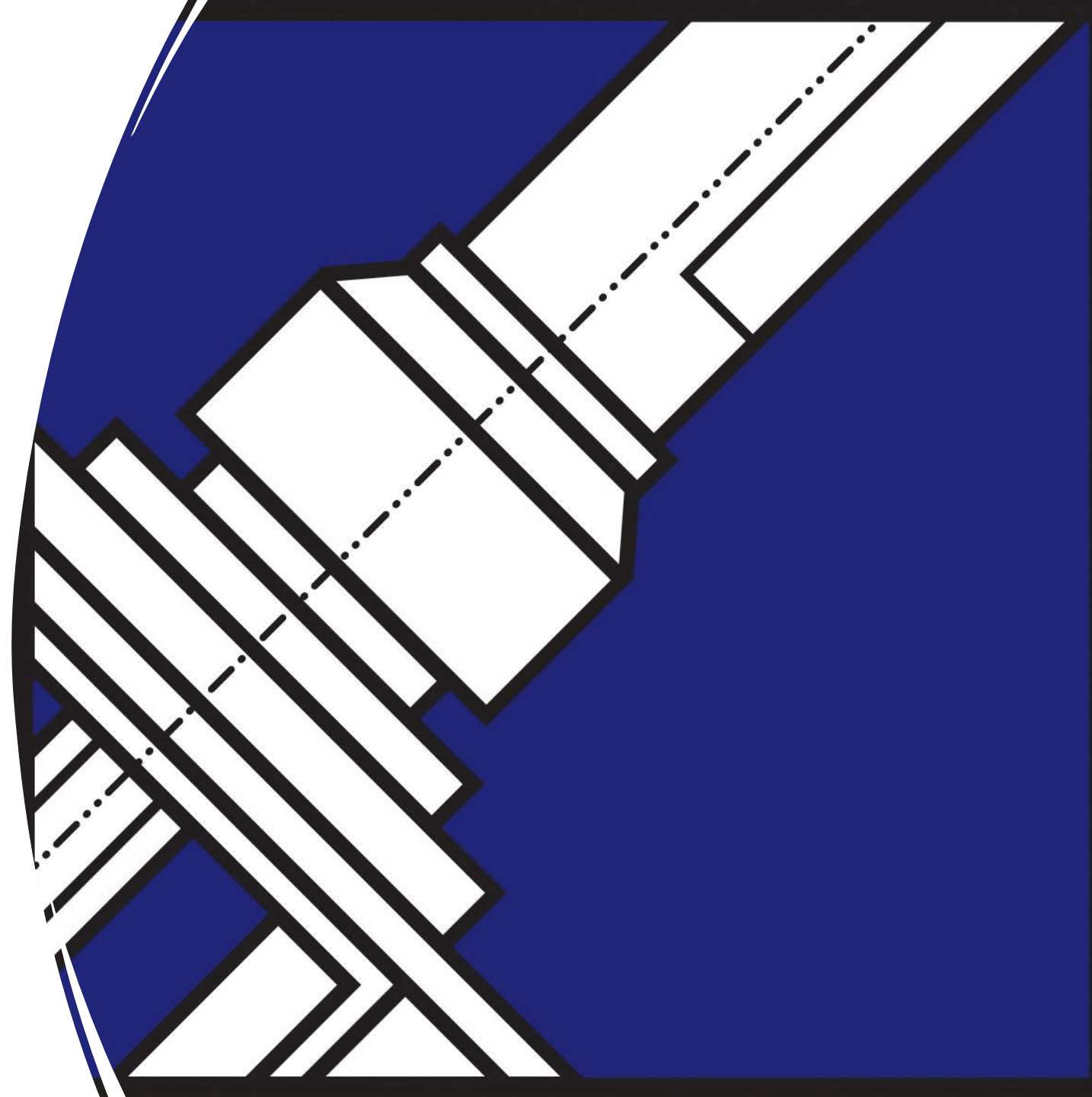
---

Types of 14mm CP pots:

- Model P140 Rotary potentiometer

These will be further classified as :-

Top/side adjust, with/without bushing



Model P140  
 14mm Rotary Potentiometer  
 Dual Unit  
 Conductive Plastic Element  
 With / Without Bushing  
 Insulated Shaft  
 RoHS Compliant



**MODEL STYLES**

Side Adjust, without Bushing	P140KV
Side Adjust, with Bushing	P140KV1
Top Adjust, without Bushing	P140KH
Top Adjust, with Bushing	P140KH1

**ELECTRICAL<sup>1</sup>**

Resistance Range, Ohms	500-2M (for "B" taper) 1K-2M (for other tapers)
Standard Resistance Tolerance	± 20%
Residual Resistance	20 ohms max.
Input Voltage, maximum	50 Vac max.
Power rating, Watts	0.05w
Dielectric Strength	500Vac, 1 minute
Insulation Resistance, Minimum	100M ohms at 250Vdc
Sliding Noise	100mV max.
Gang Error ( Multi-ganged )	-40dB – 0dB, ±3dB
Actual Electrical Travel, Nominal	260°

**MECHANICAL**

Total Mechanical Travel	300°± 10°
Static Stop Strength	70 oz-in
Rotational Torque	0.5 to 1.25 oz-in

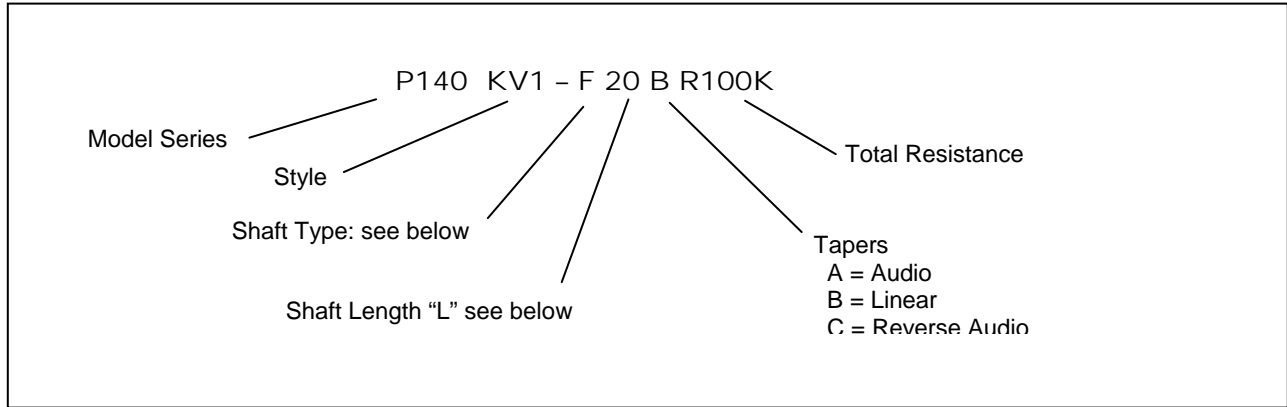
**ENVIRONMENTAL**

Operating Temperature Range	-20°C to +70°C
Rotational Life	30,000 cycles

<sup>1</sup> Specifications subject to change without notice.

# Model P140

## ORDERING INFORMATION<sup>2</sup>



### Shaft Types

	F-TYPE					Y-TYPE			
WITH BUSHING	L	15	20	25	30	L	15	20	
	T	7	12	12	12	T	7	12	
WITHOUT BUSHING	L	15	20	25	30	35	L	15	20
	T	4.5	7	12	12	12	T	5	7

## STANDARD RESISTANCE VALUES, OHMS

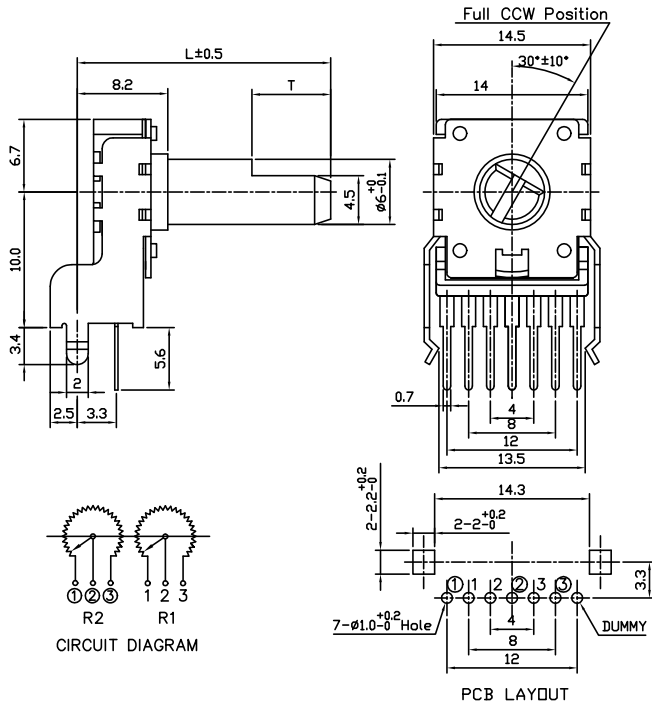
500    1K    2K    5K    10K    20K    50K    100K    200K    500K    1MEG

<sup>2</sup> Contact our customer service for custom designs and features.

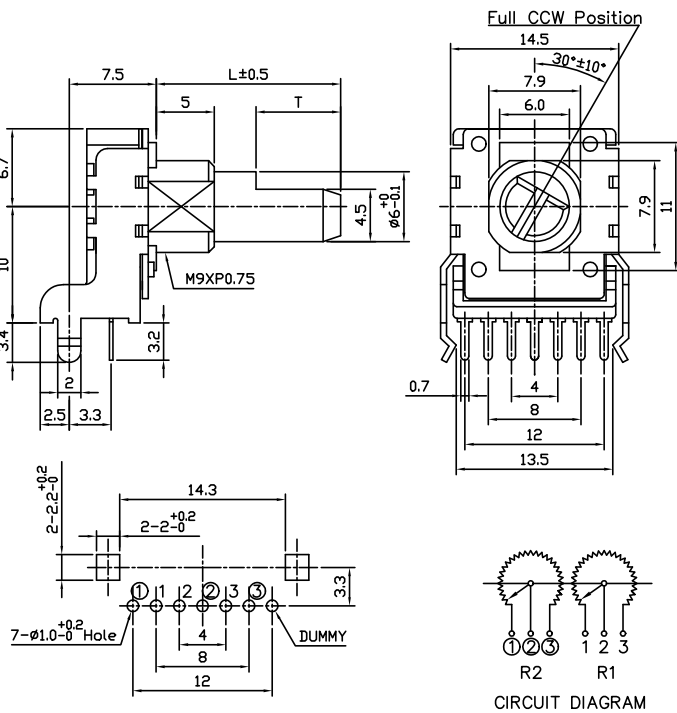
# Model P140

## OUTLINE DRAWING

### Model P140KV (Side Adjust, without Bushing)

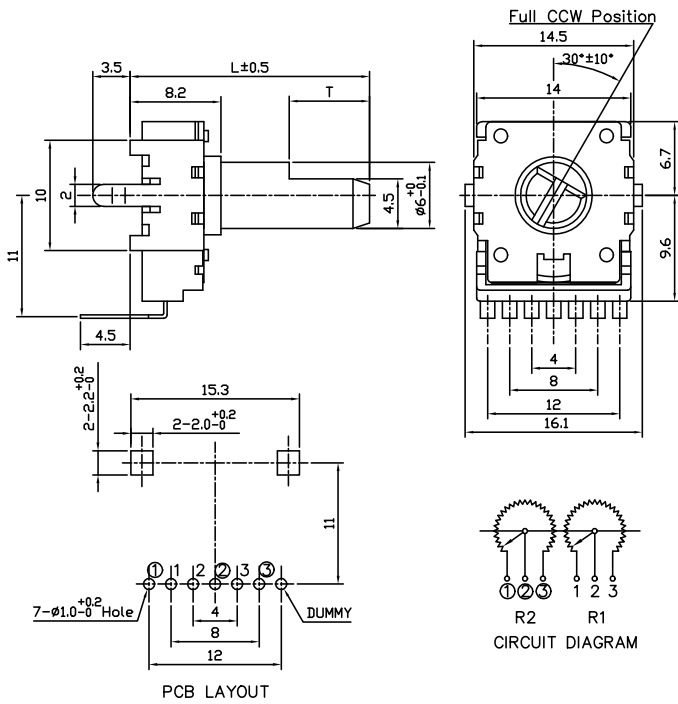


### Model P140KV1 (Side Adjust, with Bushing)



# Model P140

## Model P140KH (Top Adjust, without Bushing)



## Model P140KH1 (Top Adjust, with Bushing)

