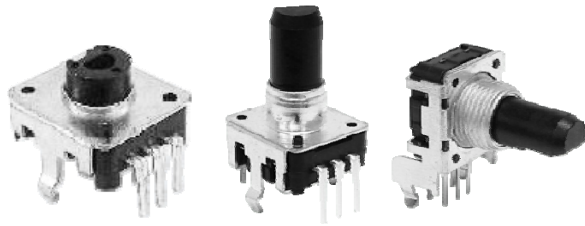


ENCODER

12mm Size Encoder



◆FEATURE

- High-precision rotary type encoder.
- Compact design, long life and high reliability.
- Low cost as compared with optical type.
- Available in a wide variety of line up to meet all user needs.

◆APPLICATIONS

- All kinds of level control, tuning and timer setting in audio-visual equipment, ordinary household electric appliances, radio equipment, communications equipment, etc.

◆ COMMON SPECIFICATIONS

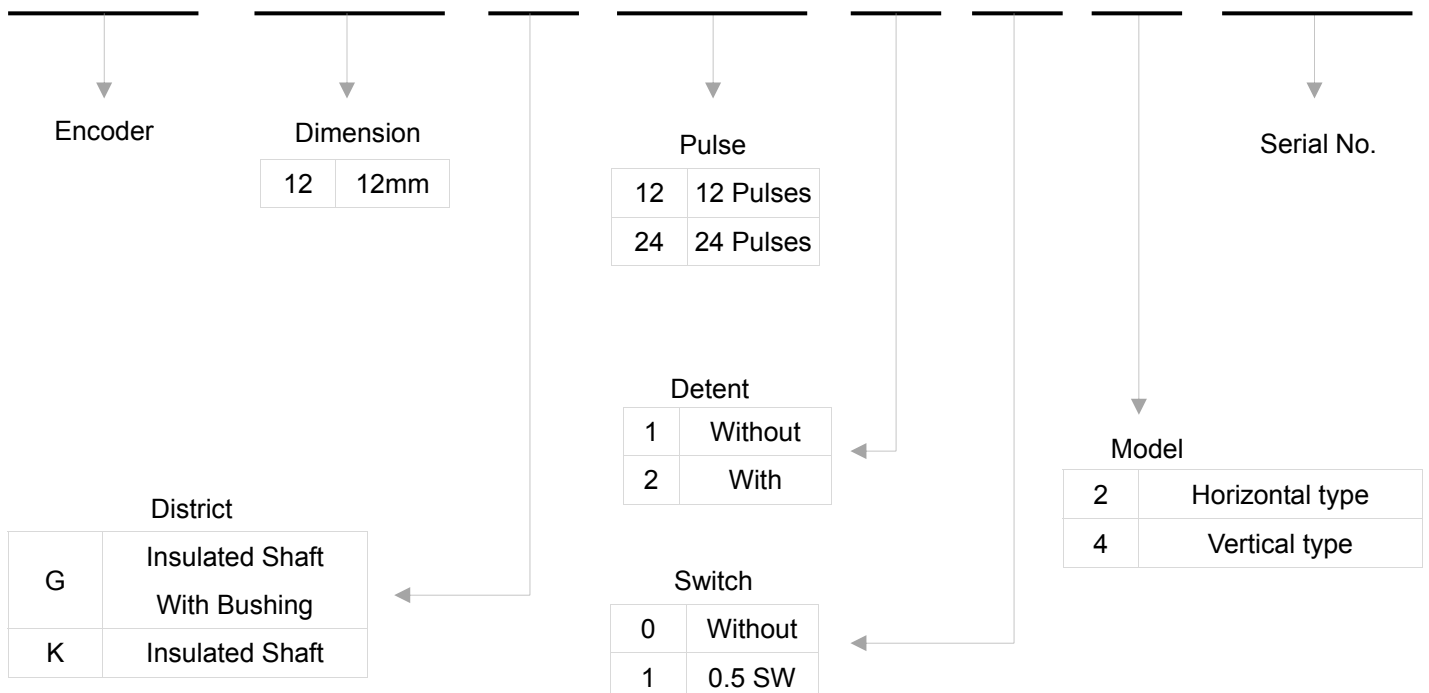
Pulse	Number of detent	Phase difference (msec)	Chattering (msec)	Sliding noise (msec)	Insulation resistance	Dielectric strength	Detent torque (gf · cm)	Rotational life (cycle)
12	0	4	3	2	250V DC 100MΩ MIN	300V AC 1 min	30~200	30,000
	12							
	24							
24	0	3.5	3	2				
	24							

◆ SWITCH SPECIFICATIONS

Rating	Contact resistance	Insulation resistance	Dielectric strength	Contact arrangement	Travel of switch (mm)	Operating force (gf)	Operating life (cycle)
DC 5V 10 mA	100 mΩ	250V DC 100MΩ MIN	300V AC 1 min	PUSH ON	0.5	300+150/-100	20,000

◆ PRODUCT NUMBERING SYSTEM

D	C	1	2	K	1	2	2	1	4	0	1
---	---	---	---	---	---	---	---	---	---	---	---



ENCODER

12mm Size Encoder

◆ STANDARD DIMENSION OF SHAFT AND BUSHING

Without Switch		0.5mm Switch Stroke		With Bushing (Without Switch)				With Bushing (0.5mm Switch Stroke)			
LM	L2	LM	L2	LM	LB	L1	L2	LM	LB	L1	L2
17.5	5	15	3	17.5	5	12	5	15	5	8.5	3
20	7	17.5	5	20	7	14.5	7	17.5	5	11	5
25	12	20	7	25	7	19.5	12	20	5	13.5	7
30	12	25	12	30	7	24.5	12	25	5	18.5	12
-	-	30	12	-	-	-	-	30	7	23.5	12

DIMENSION

Unit : mm

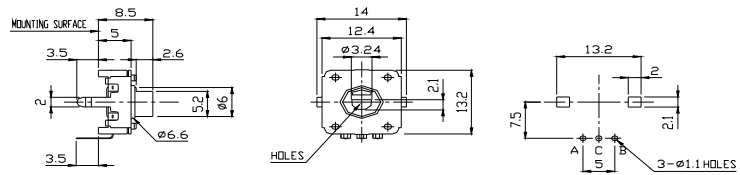
Model	Dimensions
DC12K24201 Hollow shaft horizontal type 	
DC12K24202 horizontal type 	
DC12K24212 with push on switch -0.5mm horizontal type 	

ENCODER

12mm Size Encoder

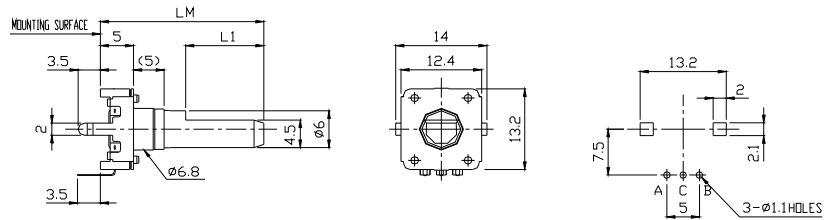
DC12K24203

Hollow shaft
vertical type



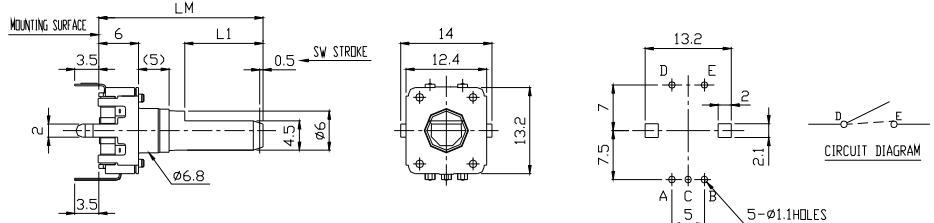
DC12K24204

vertical type



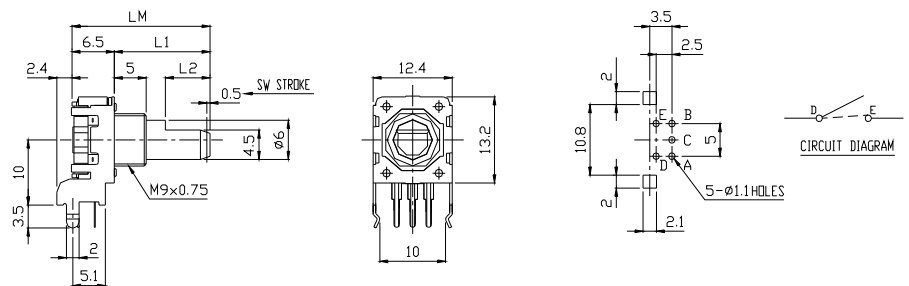
DC12K24214

with push on switch -0.5sw
vertical type



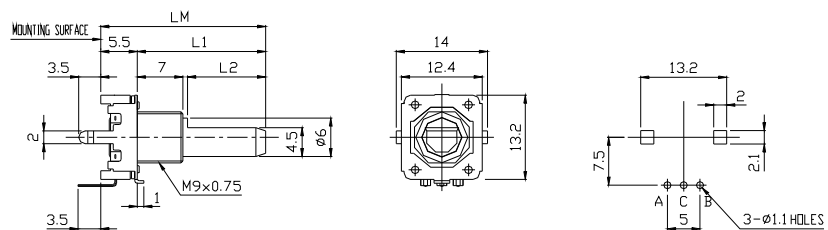
DC12G24212

horizontal type



DC12G24204

vertical type



DC12G24214

vertical type

